

**Standard Speedometer
For Motor Cycles**

"The Instrument of Permanent Accuracy"

FREE COPY

**EXHIBIT LIBRARY
MMA - DETROIT**

1911

YEAR CODE BOX

**STANDARD
SPEEDOMETER**

"THE INSTRUMENT OF PERMANENT ACCURACY"

H. CUNTZ

**Made So 1911
Standard**

**Speedometers
for Motor Cycles**



**STANDARD
THERMOMETER COMPANY**

**65 SHIRLEY STREET
BOSTON, MASS., U. S. A.**

STANDARD SPEEDOMETER

"THE INSTRUMENT OF PERMANENT ACCURACY"

The line of Standard Speedometers for Motor Cycles for the season of 1911 is enlarged and improved in several respects. While a great many riders and dealers all over the country said that the Standard was the first speedometer for motor cycles, we have seen a few chances for improvement and we have made them where it was possible. We have added a new model with season odometer only in either 60 or 80 mile dial.

This makes a line of six styles to choose from. We have also added a reinforcing coil at the lower end of the flexible shaft casing so that it will be almost impossible to break the shaft even in a severe accident.

We have also added to our line a rear drive attachment for every make of machine, one of which we illustrate. Although we do not consider that this is the most practical method, we are prepared to furnish these rear drive attachments when they are specified.

The above line of speedometers and attachments make the most complete assortment to choose from that has ever been offered. The Standard is the only speedometer that can be had with attachments to fit any make of spring fork, and the various fittings which we show on our other page will give a fair idea of the detail we have gone into to be able to furnish the right parts for every make of machine.

The police departments in over twenty of the largest cities in the country are using the Standard Speedometer, after experimenting with other makes. This is one of the best proofs that we can possibly give to show that the Standard is the Instrument of Permanent Accuracy.

EXCELSIOR



SIZES OF GEARS.

26 teeth } 5 pitch 26 teeth } 8 pitch
28 teeth } 28 teeth }

with clips for either 36 or 40 spokes.

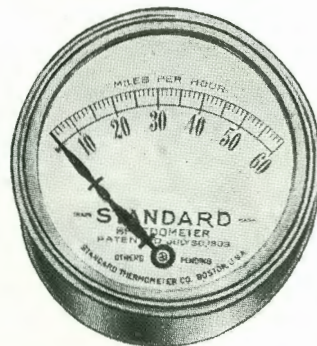
SIZES OF HANDLE BAR CLAMPS.

$\frac{7}{8}$ inch $\frac{1}{2}$ inch 1 inch

LENGTHS OF FLEXIBLE SHAFTS.

22 inches 28 inches
24 " 30 "
26 " 32 "

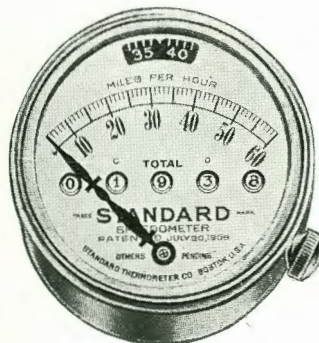
1911 MODELS



3 INCH, 60 MILE OR 80 MILE DIAL

Complete with Shaft and Fittings

\$15.00

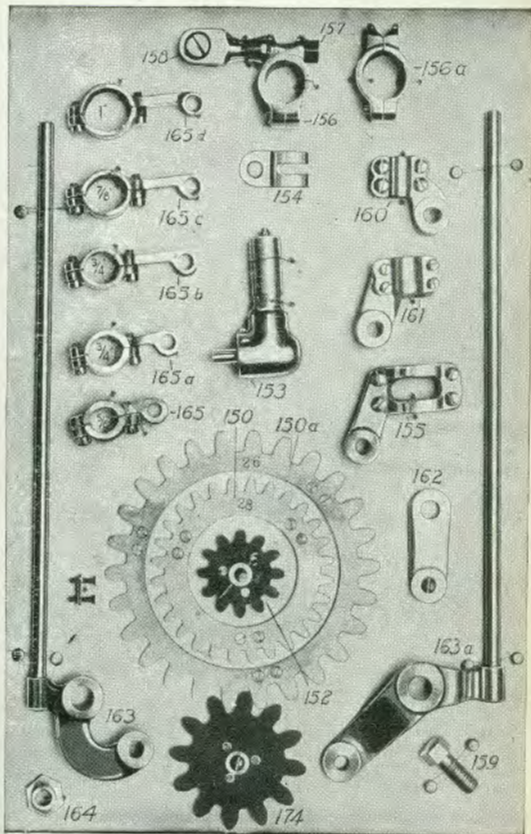


3 INCH, 60 MILE DIAL, 10,000 MILE SEASON
AND 100 MILE TRIP ODOMETER

Complete with Shaft and Fittings

\$20.00

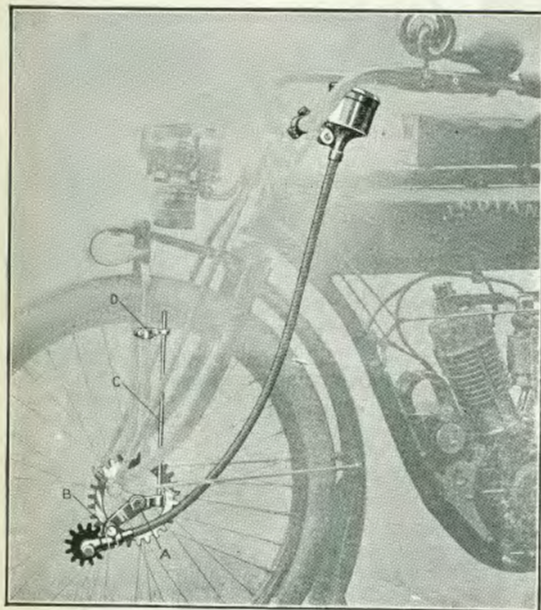
SPECIAL FITTINGS



No. 4

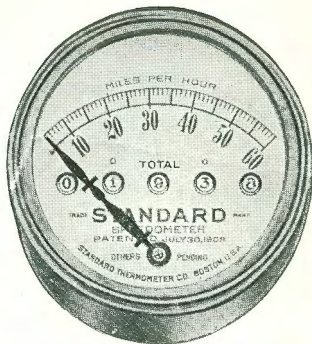
The various parts shown above, constitute the most complete line of Motor-Cycle Speedometer attachments ever brought out.

1911 INDIAN

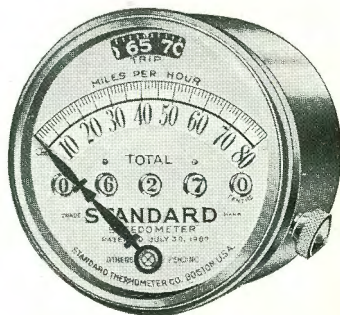


We can furnish special attachments for the following machines:

Indian	Emblem	Greyhound
Excelsior	Reliance	Pioneer
Harley-Davidson	American	Minneapolis
Yale	Reading Standard	Wagner
Curtiss	M—M —	Crouch
Marvel	Merkel	N. S. U.
New Era	Thor	F. N.
Raycycle	Pierce	S. D.
		Pontiac



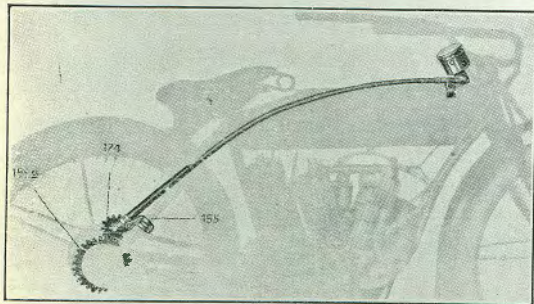
3 INCH 60 OR 80 MILE DIAL
SEASON ODOMETER ONLY
Complete with Shaft and Fittings
\$18.00



3 INCH 80 MILE DIAL
TRIP AND SEASON ODOMETER
\$20.00

STANDARD SPEEDOMETER

"THE INSTRUMENT OF PERMANENT ACCURACY"



Rear Drive Attachment For 1911 Indian.

It can be furnished for any other make of machine.

The prices are the same as for the
Front Drive, viz.:

\$15.00

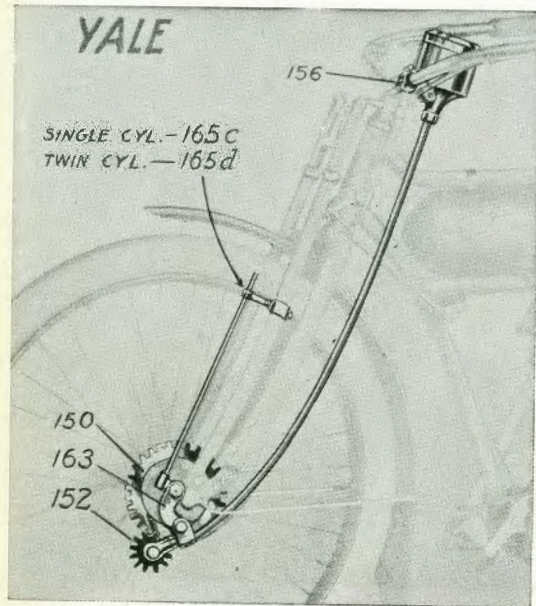
\$18.00

\$20.00

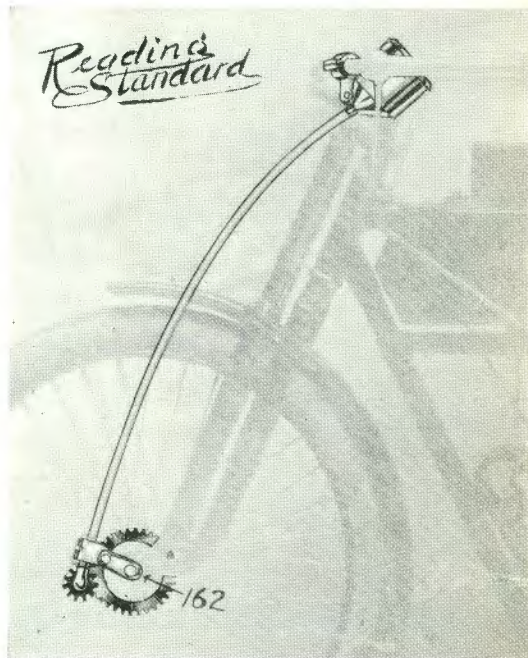
GREYHOUND



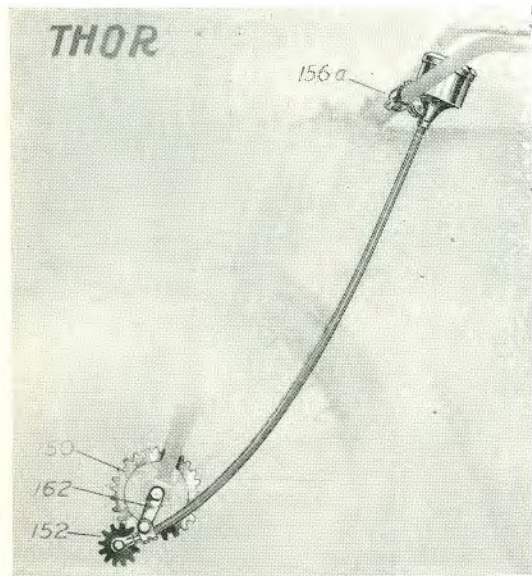
SWIVEL NUT FITTING



READING STANDARD



THOR



Follow the illustrations and directions in attaching your speedometer, and it will give perfect results.

GUARANTEE



ⒸThe ACCURACY and STABILITY of our instruments if properly installed are guaranteed beyond question. The instruments are put through a thorough comprehensive test before leaving the factory and all parts are interchangeable. Our guarantee is most specific and liberal.



ⒸWE GUARANTEE Standard Speedometers against all mechanical defects. Should any defect due to workmanship or material develop in the instrument, it will be repaired free of charge if returned to the factory, carriage prepaid. If accidentally broken repairs will be made at a minimum expense if returned to the factory, carriage prepaid.

M-M- ATTACHMENT

